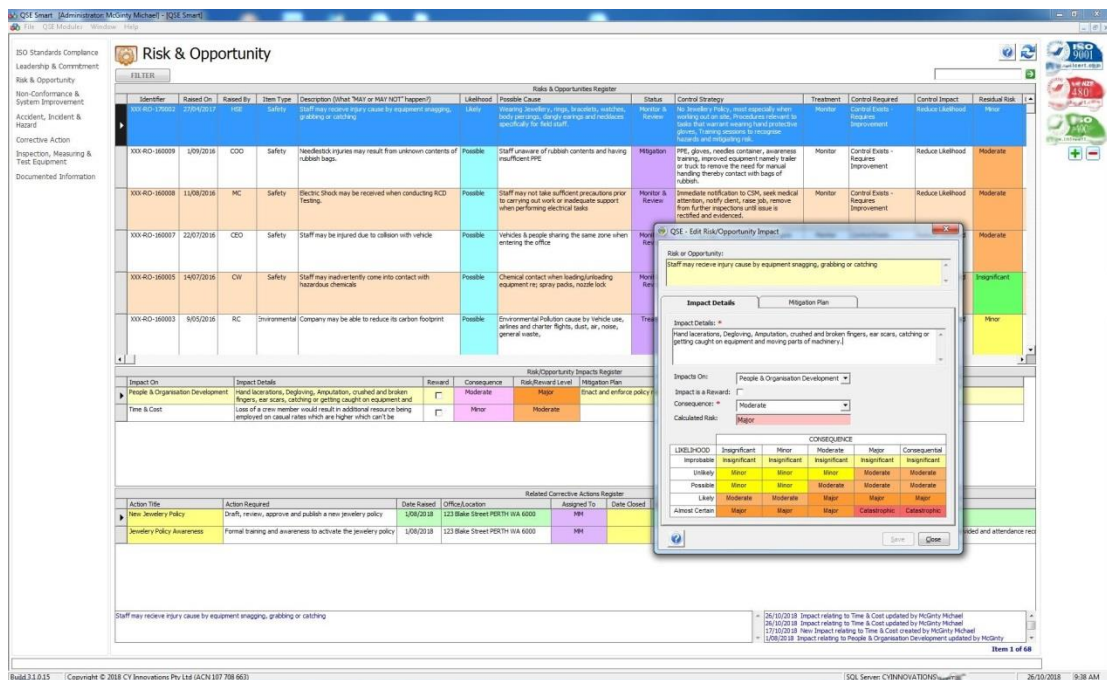


QSE SMART is a quality, safety, environmental and risk management software application developed especially for small to medium size business organisations and projects of 5 to 500 users.

QSE SMART provides a solid framework that complies with key requirements of ISO9001, 45001 and 14001, and simplifies the day-to-day running of your integrated QSE management system. QSE SMART makes ISO make sense in your business.

Designed around a risk based approach according to ISO 31000, QSE SMART helps you to capture and exploit the key information and metrics that support your business including objectives and targets, management reviews, risks and opportunities, non-conformances and improvements, audits and inspections, accidents, incidents and hazards, corrective actions, equipment calibration and control of documented information. QSE SMART also safeguards the records and evidence necessary for ISO certification, in an organised way.

QSE SMART is highly customisable and easily configurable to satisfy your QSE and business risk management needs.



DEPLOYMENT OPTIONS

QSE SMART can be set up on-premises or via intranet. Refer to the [On-Line Help Manual](#) for more information

SYSTEM REQUIREMENTS

A multi-user QSE SMART system consists of the following components:

1. a server computer (or multiple servers) running the *QSE Database* component and containing the QSE administration database and the QSE Records file Repositories
2. the QSE SMART *client application* used for creating, displaying and editing the stored content via the end-users' computers

Recommended Hardware Requirements:

CPU	Intel® Core™ i7-5500 or equivalent
Memory	16 GB
Storage (Registered Multi-User)	2 Gb RAID 1 or RAID 5 disks and enough disk space for Record files, databases, and backups
Display	1920 x 1080 pixels
Operating system	Microsoft® Windows 64-bit operating system
Database management system	Microsoft® SQL Server 2014 or later, Express, Standard or Enterprise Edition
Network	TCP/IP 100Mbps

Operating System Requirements

QSE SMART Desktop Application:

- Microsoft Windows 10, 8.1, 7 (Service Pack 1)
- Microsoft Windows Server 2016, 2012 R2, 2008 R2 (Service Pack 1)

QSE SMART Server Application:

- Microsoft Windows Server 2016 (recommended), 2012 R2, 2012, 2008 R2 (Service Pack 1)
- Microsoft Windows 10, 8.1, 7 (Service Pack 1)

The operating system version can be either Workstation or Server. QSE SMART can be installed either on a physical or a virtualized server.

Server Disk Space Requirements

Typical Metadata SQL Database:

- Local hard disk drive via a hidden share folder
- 100 – 200 MB of disk space per 100,000 QSE records
- 1 - 2 GB of disk space per 1,000,000 QSE records

Typical Record File Repositories:

- Local hard disk drive OR a network file server via a hidden share folder
- Sufficient disk space for storing the physical native record files

Microsoft SQL Server Requirements

When first installed, QSE SMART is deployed using the Microsoft® Access JET database engine and you do not need to purchase any other database software or applications to run the QSE SMART Freeware. Once you register for an ENTERPRISE Multi-User license we recommend that you migrate the *QSE Database* to Microsoft SQL Server which you can do simply with QSE SMART's SQL Server migration feature.

You can use Microsoft SQL Server 2008, 2008 R2, 2012, 2014, 2016 (recommended) or later with its latest service pack as the *QSE* database engine including Express, Standard, and Enterprise editions.

The following features need to be enabled if you wish to use a Microsoft SQL Server instance as the QSE SMART database engine (refer to the [On-Line Help Manual](#) for more information):

Instance features:

- Database Engine Services

Shared features:

- SQL Server Management Studio Tools, Basic

INTEGRATED APPLICATIONS & SERVICES

Recommended Support Software Applications and Services:

3rd Party Applications	Microsoft® Office 2016 (32 Bit) Microsoft® Outlook 2016 (32 Bit)
--	---

Technical Support

For further technical support, please visit us on-line at <https://cyinnovations.freshdesk.com/support/home>.